



2000W HIGH POWER BARREL VACUUM CLEANER

INSTRUCTION MANUAL

Contents

Safety Introduction	2
Product Introduction	4
Product Operation	6
Product Maintenance	8
Trouble Shooting	9

Safety Introduction

1. For the first operation, it is advisable to read the manual carefully before hand and keep it properly for future use.
2. Before the first operation, make sure the dust cup or the dust bag is properly installed.
3. Make sure the power supply is 220-240V~ 50/60Hz
4. Do not vacuum water and inflammable material.
5. Do not vacuum burning material and ashes.
6. Do not use the machine without a motor protection filter filled.
7. Please change the dust bag immediately when it was damaged.
8. Do not store or use the machine close to high temperature places.
9. Do not let children use the machine in case of danger.
10. If abnormal noise, smell, smoke or any other failure or breakage is found during the operation, you should turn off the switch and unplug it. Then contact with your service center for repair. Do not repair by yourself.
11. If the supply cord is damaged, it must be replaced by the manufacturer or its service agent or a similarly qualified person in order to avoid a hazard.

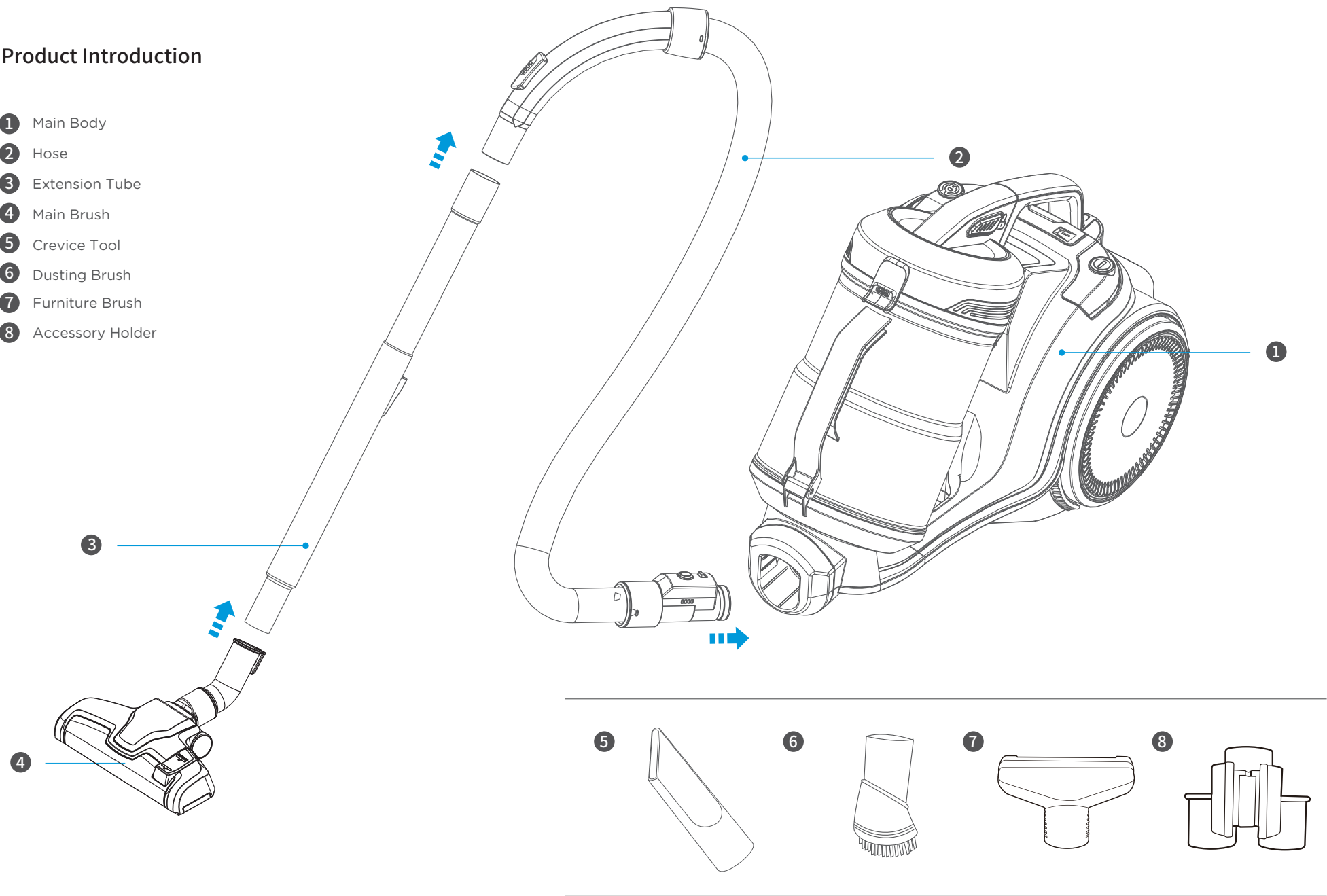
12. This appliance is not intended for use by persons (including children) with reduced physical, sensory or mental capabilities, or lack of experience and knowledge, unless they have been given supervision or instruction concerning use of the appliance by a person responsible for their safety.
13. Children should be supervised to ensure that they do not play with the appliance.

▲ Warning:

The plug must be removed from the power socket before any maintenance or replacement.
If the power cord is damaged, replace them only by the factory or maintenance center or similarly qualified persons.

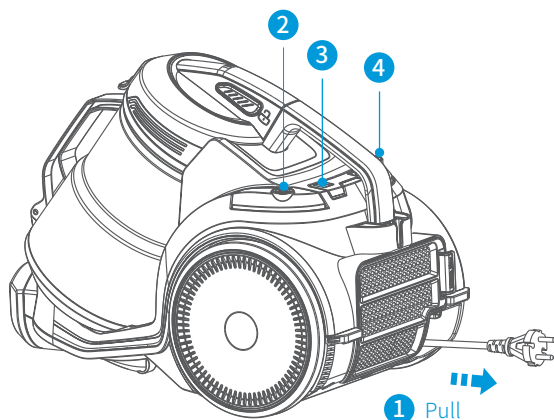
Product Introduction

- 1 Main Body
- 2 Hose
- 3 Extension Tube
- 4 Main Brush
- 5 Crevice Tool
- 6 Dusting Brush
- 7 Furniture Brush
- 8 Accessory Holder



Product Operation

Product use



01. Pull out the power cord to connect the power supply:

When you see the red mark on the power cord, do not pull out the cord outward.

02. Press the ON/OFF button:

Control the start and stop of the vacuum cleaner.

03. Adjust the suction:

Adjust the suction magnitude by rotating the knob. Use large suction for carpets and flooring. Use small suction for curtains, tablecloths and other items.

04. Press the take up button:

The power cord is automatically rolled back into the machine.

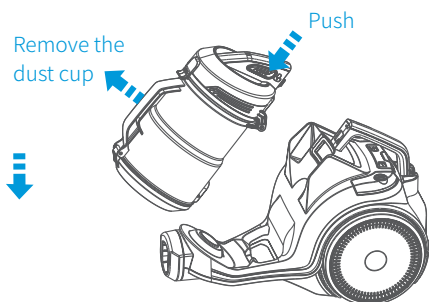
! Caution

Please slowly take up the cord, to avoid the power cord or power plug bruising human body or furniture in the process of taking up.

Product Maintenance

Dust cup cleaning

01. Remove the dust cup: Press the dust cup release button, gently lift the grip of dust cup and remove the dust cup.

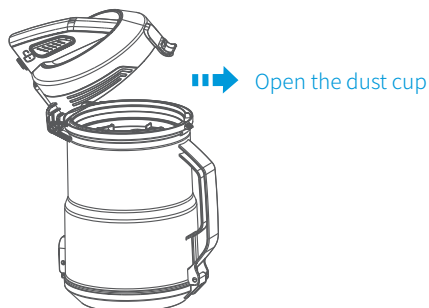


02. Dump the garbage: Tap the dust dumping button to dump the garbage.



Dust cup maintenance

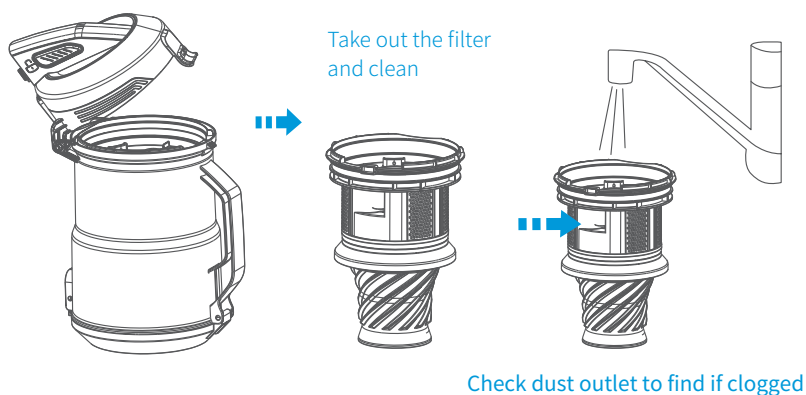
01. Open the dust cup: Gently lift the dust cup open button, and then lift up to open the dust cup cover.



02. Remove the filter cotton for cleaning: Open the dust cup, remove the filter cotton and clean it.



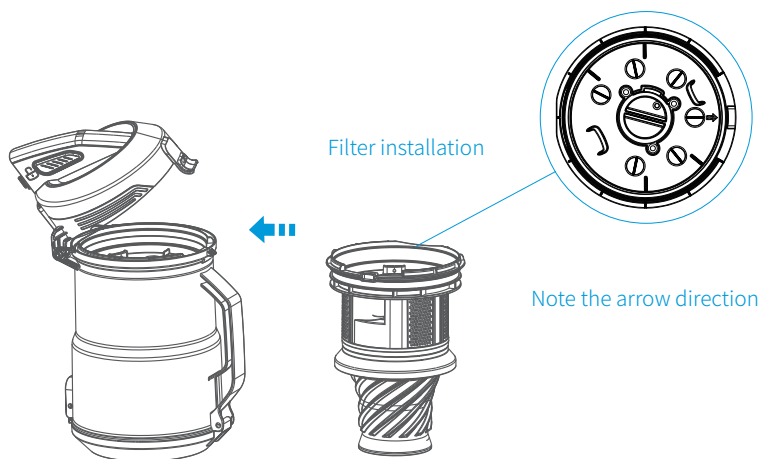
03. Filter disassembly and cleaning: Raise the filter and remove the filter cover, put the filter under the faucet for washing.



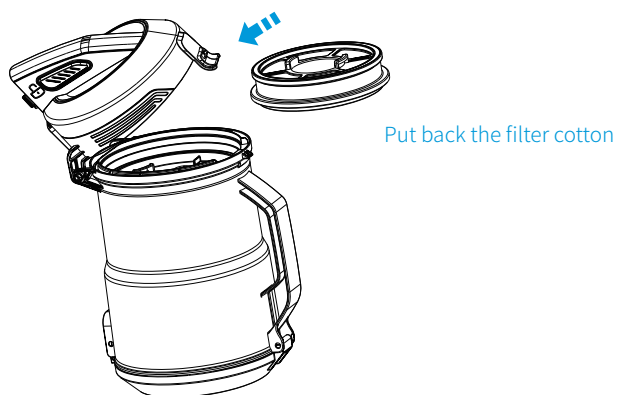
⚠ Caution

To ensure good performance, please do maintenance for filters regularly, if cyclone is clogged, vacuum cleaner will loss suction.

04. Filter installation: Note the arrow direction.



05. Put back the filter cotton.



⚠ Caution

1. The filter parts can be put back for use only after being cleaned and dried. It is recommended to have sun exposure for 24 hours to ensure it is thoroughly dried.
2. All parts must be ensured to be properly installed, otherwise it will cause product failure.
3. Water is not allowed to penetrate into the vacuum cleaner electrical components, or otherwise may cause product failure.

TROUBLESHOOTING

In case of malfunction, please refer to the following table

Problem	Possible reason	Solution
The vacuum cleaner does not work	<ul style="list-style-type: none">- The power plug is not properly plugged into the socket- No electricity on the power socket- The vacuum cleaner switch is not turned on- Motor thermal protector acts	<ul style="list-style-type: none">- Reinsert the plug- Check the circuit breaker- Press the machine's power switch- Unplug the plug and wait for the thermal protector to recover
Suction becomes weaker	<ul style="list-style-type: none">- The main brush or accessories are clogged- Dust in the dust barrel is too full- Dust in the dust cup filter cotton is too much	<ul style="list-style-type: none">- Clean up the stemming- Timely clean up garbage- Clean the filter cotton

If the problem still can't be solved, please contact local service center.