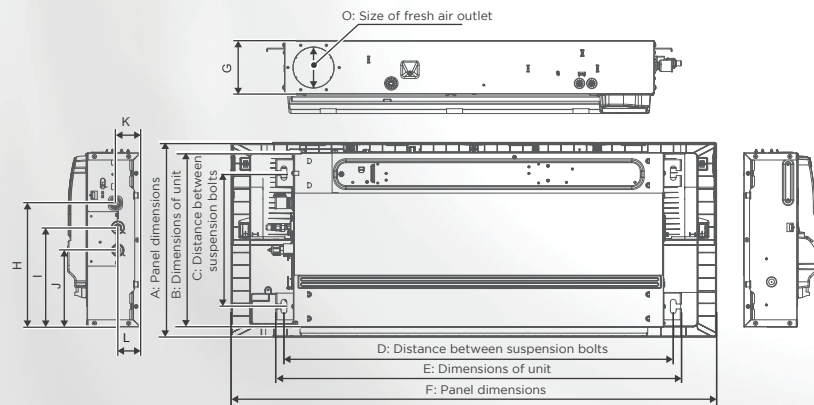


Dimensions (unit:mm)



Capacity(kW)	A	B	C	D	E	F	G	H	I	J	K
kW≤2.2	475	425	325	746	786	980	130	303	243	188	60
2.2<kW≤3.6	475	425	325	946	986	1180	130	303	243	188	60
3.6<kW≤7.1	475	425	325	1246	1286	1480	130	303	243	188	60

Specifications

Model			MIH18Q1HN18(A)		MIH22Q1HN18(A)		MIH28Q1HN18(A)		MIH36Q1HN18(A)	
Power supply			1-phase, 220-240V, 50/60Hz							
Cooling ¹	Capacity	kW	1.8		2.2		2.8		3.6	
		kBtu/h	6.1		7.5		9.6		12.3	
Heating ²	Power input	W	15		19		27		29	
	Capacity	kW	2.0		2.5		3.2		4.0	
		kBtu/h	6.7		8.5		10.9		13.6	
	Power input	W	15		19		27		29	
	Airflow rate ³	m ³ /h	300/283/266/250/233/216/200		400/375/350/325/300/275/250		550/464/428/392/356/320/285		550/469/439/409/378/348/318	
Sound pressure level ⁴		dB(A)	28/27/26/25/24/23/23		32/30/29/28/27/26/25		33/31/30/29/27/26/25		36/34/33/32/30/29/28	
Indoor unit	Net dimensions ⁵ (WxHxD)	mm	700x130x425				900x130x425			
	Packed dimensions (WxHxD)	mm	880x225x510				1080x225x510			
	Net/Gross weight	kg	9.6/11.9				11.2/13.8		12.2/14.7	
Panel	Net dimensions (WxHxD)	mm	980x64x475				1180x64x475			
	Packed dimensions (WxHxD)	mm	1070x100x560				1270x100x560			
	Net/Gross weight	kg	2.4/4.4				3/5.2			
Pipe connections	Liquid/Gas pipe	mm	Φ6.35/Φ12.7							
	Drain pipe	mm	OD Φ25							

Model			MIH45Q1HN18(A)		MIH56Q1HN18(A)		MIH71Q1HN18(A)	
Power supply			1-phase, 220-240V, 50/60Hz					
Cooling ¹	Capacity	kW	4.5		5.6		7.1	
		kBtu/h	15.4		19.1		24.2	
Heating ²	Power input	W	30		40		52	
	Capacity	kW	5.0		6.3		8.0	
		kBtu/h	17.1		21.5		27.3	
	Power input	W	30		40		52	
	Airflow rate ³	m³/h	850/702/655/607/560/512/465		1000/845/791/737/683/629/575		1050/916/853/790/726/663/600	
Sound pressure level ⁴		dB(A)	39/37/36/35/34/33/32		45/43/42/40/39/37/36		47/45/44/43/42/41/40	
Indoor unit	Net dimensions ⁵ (WxHxD)	mm	1200x130x425					
	Packed dimensions (WxHxD)	mm	1280x225x510					
	Net/Gross weight	kg	14.3/17.7		15.5/18.8			
Panel	Net dimensions (WxHxD)	mm	1480x64x475					
	Packed dimensions (WxHxD)	mm	1570x100x560					
	Net/Gross weight	kg	3.8/6.5					
Pipe connections	Liquid/Gas pipe	mm	6.35/ 12.7				9.52/ 15.9	
	Drain pipe	mm	OD 25					

- Notes:
- 1. Indoor temperature 27°C DB, 19°C WB; outdoor temperature 35°C DB; equivalent refrigerant piping length 7.5m with zero level difference.
 - 2. Indoor temperature 20°C DB; outdoor temperature 7°C DB, 6°C WB; equivalent refrigerant piping length 7.5m with zero level difference.
 - 3. Air flow rate are from the highest speed to the lowest speed, total 7 rates for each model.
 - 4. Sound pressure level is from highest level to lowest level, total 7 levels for each model. Sound pressure level is measured 1.4m below the unit in a anechoic chamber.
 - 5. Unit body dimensions given are the largest external dimensions of the unit, including hanger attachments.

Midea Building Technologies Division
Midea Group

Add.: Midea Headquarters Building, 6 Midea Avenue, Shunde, Foshan, Guangdong, China
Postal code: 528311
mbt.midea.com/global www.midea-group.com ics.midea.com
Midea reserves the right to change the specifications of the product, and to withdraw or replace products without prior notification or public announcement. Midea is constantly developing and improving its products.



B-V8Q1NH202412




NEW

VRF Indoor Units
One-way Cassette



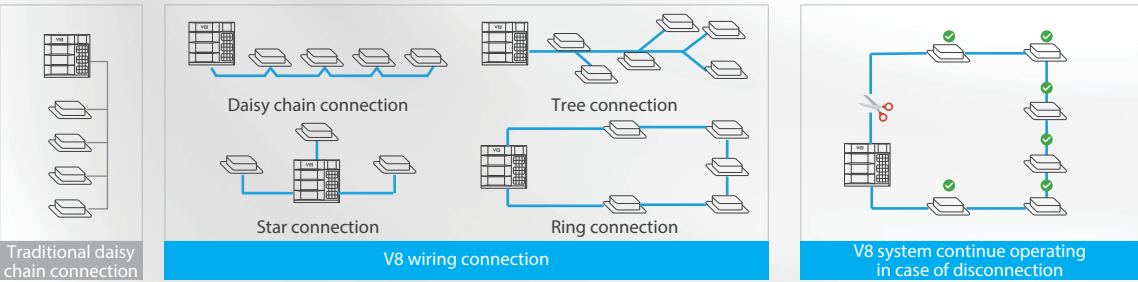
DISCOVER
RELIABLE COMFORT

Why Choose V8 One-way Cassette Indoor Units




True Feelings 1: During the installation of VRF systems, errors often occur when connecting the communication line, often resulting in project delay

Support any topology communication*
In addition to the traditional daisy chain connection, the communication wire supports tree connection, star connection, ring connection and so on. The wiring is flexible, which greatly reduces the installation cost and has no possibility of wrong connection on site.




*Only when use HyperLink communication.



True Feelings 2: I spent 200 days a year in other hotels because of business trips. The most troublesome thing was that I could not sleep because the air conditioner was too noisy at night.

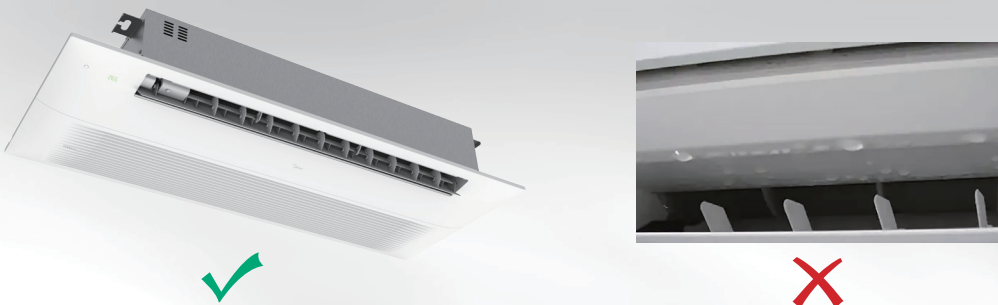
Quiet Operation
By optimizing the design of fan motor, air duct and heat exchanger, the new duct operates with noise as low as 23dB(A), creating a quieter and more comfortable environment





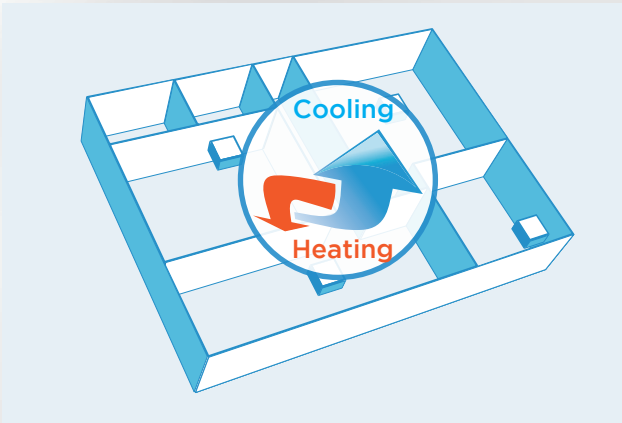
True Feelings 3: When using the air conditioner every summer, the air conditioner always drips water and causes the floor dirty.

Automatic anti-condensation
The One-way Cassette can automatically enter and exit the anti-condensation mode by detecting its own operation data; In the anti-condensation mode, the machine can change the outlet angle of the guide vane intermittently to prevent the local temperature difference of the guide panel from being too large and avoid the occurrence of condensation.

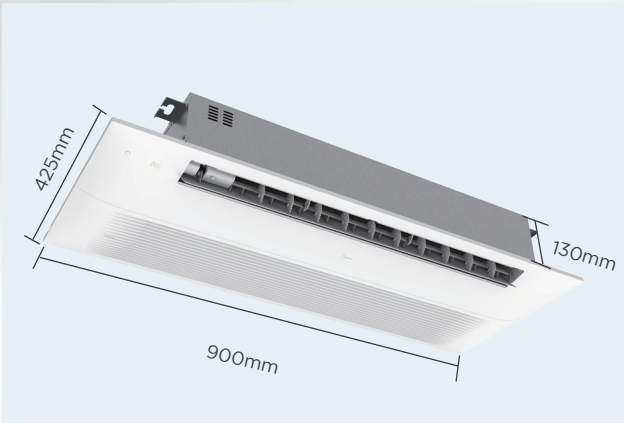


Features

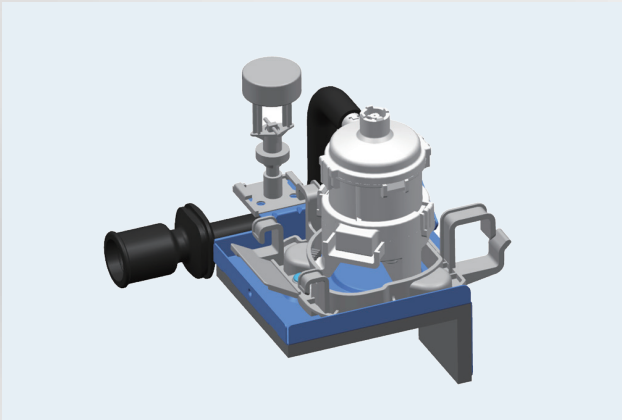
Auto Cooling-heating Changeover
Automatically selects cooling or heating mode to achieve the set temperature.



Ultra-thin Body Design
Ultra-thin body design, the body height of the whole series is only 130mm, greatly saving space and more flexible installation.



Digital feedback DC water pump
Digital feedback DC water pump: actively sense the pump speed and water flow to determine whether there is jamming attenuation or damage, and give early warning to avoid water leakage.



High-lift drain pump
A drain pump with a 1200mm raise height is fitted as standard, simplifying installation of the drain piping.

