

smart saver



# HOT WATER HEAT PUMP ALL-IN-ONE SYSTEM



Midea, established in 1968 is a public company listed and since July 2016 a Fortune 500 company offering one of the most comprehensive ranges in the home appliances industry. Midea specializes in air treatment (residential and commercial solutions), refrigeration, laundry, cooking appliances, small kitchen appliances, water appliances, floor care and lighting.

## Simply ideal

(ideal product & ideal life)

Since 1968, Midea has been making homes more comfortable, efficient, and inspiring standing alongside millions of families around the world.

For over half a century, we have been part of everyday life, witnessing moments of joy, connection, and care in every corner of the home.

From pioneering smart technologies to creating solutions that balance quality, innovation, and value, Midea has continuously redefined what the "ideal" home can be.

Our purpose has always been simple: to be by your side, making each day just right, and turning your home into a place where life feels simply ideal.

## MD Appliances Pty Ltd

Founded in 2018, MD Appliances Pty Ltd is the official Australian distributor of Midea's air conditioning solutions for residential and commercial markets. Its mission is to deliver world-class cooling technology, energy efficiency, and superior comfort across Australia.

The company's vision is to become a leading HVAC company in the country, built on a professional team that combines experienced sales with agile operations and

after-sales support. With a long-term, efficiency-driven strategy and a culture of innovation, execution, and collaboration, MD Appliances has grown steadily since day one.

From deep on-site learning and capturing government energy rebates, to expanding contractor networks, opening brand stores, and scaling internal teams, MD Appliances has evolved into a mature and growing force in the Australian HVAC industry.

more than  
**\$67.19B USD**  
of revenue in  
2025

serve  
customers in  
**200+**  
countries

**40**  
global  
production  
centers

**190K+**  
employees  
worldwide

global Fortune  
**246**  
company



**7 years parts and labor warranty**

For Hi-Wall/ Ducted/ Cassette/ VRF / Heat pump



**5 years parts and labor warranty**

For Window Box A/C



**2 years parts and labor warranty**

For Heavy Commercial Products



**Local after sales service and support**

# GO FOR HEAT PUMP WATER HEATER SUPPORTED BY GOVERNMENT INCENTIVES



## Federal Small-Scale Technology Certificate (STC's) entitlements for 2026

**STC 2026\***  
Effective from 1 Jan 2026 to 31 Dec 2026

Activity	Zone 1	Zone 2	Zone 3	Zone 4	Zone 5
<b>235L</b>	<b>14</b>	<b>14</b>	<b>17</b>	<b>18</b>	<b>18</b>
<b>280L</b>	<b>13</b>	<b>13</b>	<b>16</b>	<b>17</b>	<b>17</b>

### STC

When a heat pump water heater is purchased, as high as an amount of Small-scale Technology Certificates (STCs) will be received, and these STCs can be used to discount the purchase price.



### VEU

The Victorian government provides VEECs to households in Victoria who are replacing electric water heater with heat pump water heater.



### ESC

The NSW Energy Savings Scheme (ESS) provides financial incentives to install heat pump water heater in NSW households and businesses for replacing electric water heater.

**In addition to the Federal STC rebates**

State rebates are also available in same states to replace water heating systems with efficient ones such as heat pump water heater.

VEU 2026*				ESC 2026*			
Effective from 1 Jan 2026 to 31 Dec 2026				Effective from 1 Jan 2026 to 31 Dec 2026			

State	Activity	Zone 4	Zone 5	Zone 4	Zone 5	Zone 3	Zone 5	Zone 3	Zone 5
		235L/280L Metropolitan	235L/280L Metropolitan	235L/280L Regional	235L/280L Regional	235L/280L Metropolitan	235L/280L Metropolitan	235L/280L Regional	235L/280L Regional
VIC	<b>1D</b>	10/10	10/10	11/10	11/10				
VIC	<b>3C</b>	9/9	9/9	9/9	9/9				
NSW	<b>D17</b>					26/29	28/31	27/29	29/31
NSW	<b>D19</b>					12/14	13/15	12/14	12/15

\* Product approval by VEU, CER and IPART  
 \* Terms & conditions apply - contact us for more details  
 \* 1D: HPWH replacing electric water heater; 3C: HPWH replacing gas water heater  
 D17: HPWH replacing electric water heater; D19:HPWH replacing gas water heater

# CHOOSE A SMART SAVER

# 10 AMP PLUG



The 10 AMP PLUG for water heaters is designed for both safety and efficiency! Featuring advanced overload and short-circuit protection technology, it ensures worry-free use. With its plug-and-play design, it easily integrates into household circuits, making

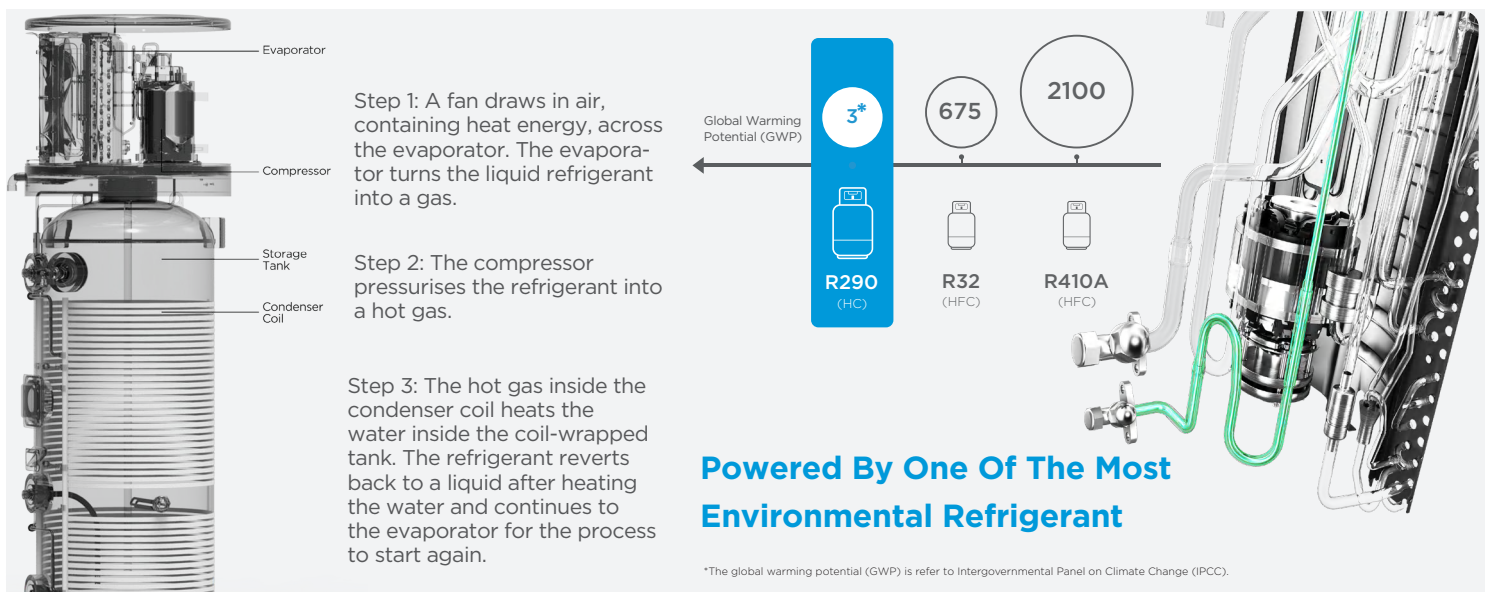
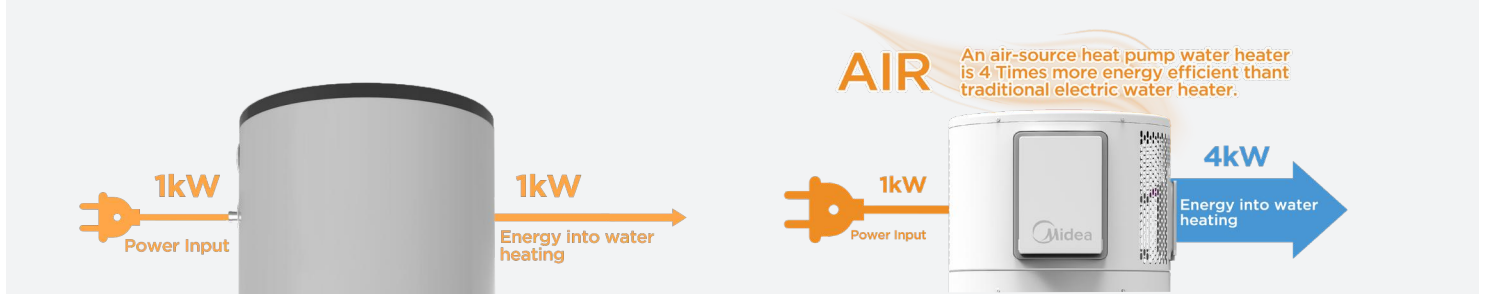
installation quick and hassle-free. Whether for daily use or long-term needs, it delivers a stable and reliable hot water experience. Highly energy-efficient, it boasts superior power conversion, heating water faster while saving electricity. Built with premium materials, it is heat-resistant and durable, ensuring a longer lifespan. Not only is it cost-effective and affordable, but it also complies with environmental standards, promoting green energy and adding an eco-friendly touch to your home and lifestyle.

Moreover, the 10 AMP PLUG is compatible with a wide range of water heater types, offering versatility to meet different household needs. Whether you're installing a new unit or replacing an old one, it is the ideal choice. Choose the 10 AMP PLUG for safety, convenience, and efficiency—let every day begin with warmth!

## Smart Heat Pump Technology With 400% Remarkable Efficiency

With just 1 kW of power input, the Midea Smart Saver can generate over 4 kW of output heat, achieving an exceptional performance efficiency of 400%.

In contrast, conventional electric storage water heaters can only convert 1 kW of input power into a maximum of 1 kW of output heat, making them significantly less efficient.



\*The global warming potential (GWP) is refer to Intergovernmental Panel on Climate Change (IPCC).

# RIGHT FOR FAMILY BIG & SMALL

170L

## Family with 2-3 people

Simultaneous hot water supply for different rooms without interfering each other.

280L

## Family with 3-4 people

Enable seamless bathing by one after another without long-time waiting.



# SAVE YOUR COST

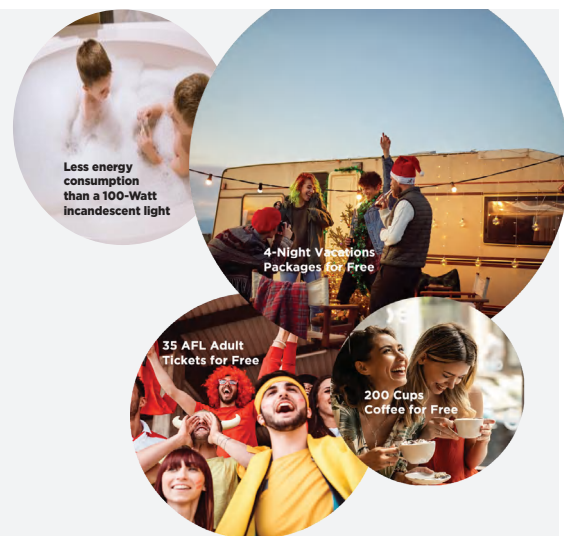
Save up to **\$993<sup>(1)</sup>**

Yearly electricity cost

**77%<sup>(2)</sup>**

Energy Saving

Compared to conventional electric water heaters, the Midea Smart Saver's exceptional efficiency allows you to save significantly on energy costs—so you can splurge on the things that truly matter.



Less energy consumption than a 100-Watt incandescent light

4-Night Vacations Packages for Free

35 AFL Adult Tickets for Free

200 Cups Coffee for Free

(1): Calculation of energy consumption is based on CER (AS/NZS 4234) modelling in Zone 3; Applicable to 280L heat pump model.  
(2): Calculation of energy consumption is based on CER (AS/NZS 4234) modelling in Zone 4; Applicable to 280L heat pump model. Electricity price is refer to Residential Electricity Price Trends 2021 by AEMC (Australian Energy Market Commission).

# GOT YOUR COVERED

## Get You Covered with Two-Way Disinfection



**Automatically Disinfection**  
periodically (24 hours) heating up the water by 60°C to prevent the growth of bacteria and legionella.



**Manually Disinfection**  
set temperature (60°C) for rapid sterilisation.



## Get You Connected with Wi-Fi Control



**ECONOMY Mode (Heat Pump Only)**  
The standard mode where the highest efficiency is achieved.



**E-Heater Mode**  
When the air temperature drops to below 5°C, the heat pump will automatically select E-heater mode for an electric hot water boost.



**Hybrid Mode**  
The Heat Pump & E-heater operate together to ensure the set temperature is achieved.



# EASY TO INSTALL

## Lightweight Design

Midea SMART SAVER Heat Pump Water Heater (280L) is 15KG lighter than last generation heat pump water heater. It will be easier to transport and move, especially when installation spot is far away from loading spot or install in apartment.



# EASY TO MAINTAIN



## Easy-to-access E-BOX

Easy-to-access E-BOX Designed for easier maintenance without complicated disassemble of top cover of unit.



### Error Code:

Quick checking out on-going problem and back tracking previous problem up to 3 times before.

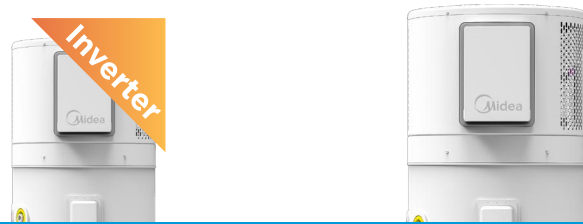


### Power Outage Memory:

Settings (set temperature, selected mode etc.) will automatically retained in the event of a power outage.



# SPECIFICATION



Sale Model	RSJ-V28/235RDN7-L2	RSJ-23/300RDN7-L2
Storage size (L)	235	280
Runing ambient temp - HP only (°C)	-7 - 43	-7 - 43
Runing ambient temp - HP & E-Heater (°C)	-20 - 45	-20 - 45
Out water Temp. (°C)	Default 60°C, 55°C-70°C	Default 60°C, 55°C-70°C
Power supply (Ph / V / Hz)	1 / 220-240 / 50	1 / 220-240 / 50
Capacity - HP Only (kW)	2.8	2.5
COP (kW/kW)	4.8	4.6
Max. current (A)	9	9
Dimension (DxH) (mm)	650 x 650 x 1730	650 x 650 x 1962
Net/gross weight (kg)	125/ 154.5	138 / 170
Sound pressure level (dB(A))	45	48
Refrigerant type/quantity (kg)	R290 / 0.43	R290 / 0.42
System protection	TCO, PTR valve, automatic defrosting, over-load protector, high-pressure protector	TCO, PTR valve, automatic defrosting, over-load protector, high-pressure protector
Air flow (L/s)	222	222
Water inlet pipe (mm)	DN20	DN20
Water outlet pipe (mm)	DN20	DN20
Drainage pipe (mm)	DN20	DN20
PT valve joint (mm)	DN15	DN15
Max. pressure (kPa)	850	850
E-heater (kW)	1	1

## Cost Saving



Eligible for government incentives



Energy-Efficient heat pump technology

## Easy Installation



Light weight design

## ECO-Friendly



R290 application

## Comfort



Wi-Fi enable



Low operating noise

## Reliability



Wider operating range between -20°C & 47°C



Built in Frost Protection



Auto & Manual disinfection

## Easy Maintenance



Easy-to-access E-Box



Error code



Power outage memory

# World's No.1 Residential Inverter Air Conditioner Company For 2 Consecutive Years

---



1. Data source: Euromonitor International (Shanghai) Limited; Consumer Appliances 2026ed, retail volume sales in units, 2024 to 2025 data.

Midea HVAC & Energy Australia  
MD APPLIANCES PTY LTD  
Head Office Address: 1513 Dandenong Road, Oakleigh VIC Australia  
Phone: 1300 726 002  
Website: [mdhome.com.au](http://mdhome.com.au)  
Email: [info@mdhome.com.au](mailto:info@mdhome.com.au)