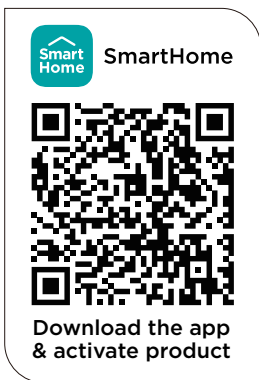




USER MANUAL OF SMART KIT



IMPORTANT NOTE:

Read the manual carefully before installing or connecting your air conditioner. Make sure to save this manual for future reference.

CONTENTS

1	SPECIFICATION	1
2	PRECAUTIONS	1
3	USING THE SMARTHOME APP	2
4	COMPLIANCE	6

1 **SPECIFICATION**

Unit model: MFAB26NB, MFAB35NB, MFAB50NB, MFAB70NB, MFAB90NB
MFAB-20NC, MFAB-26NC, MFAB-35NC, MFAB-50NC, MFAB-60NC,
MFAB-71NC, MFAB-81NC,
MWFF22H, MWFF26H, MWFF28H, MWFI36H, MWFF39H, MWFF53H
MFEP26VA-N, MFEP35VA-N, MFEP51VA-N, MFEP70VA-N, MFEP80VA-N,
MFAG20VA-N, MFAG26VA-N, MFAG36VA-N, MFAG51VA-N,
MFAG60VA-N, MFAG70VA-N, MFAG80VA-N,
MFXS20N, MFXS26N, MFXS35N, MFXS50N, MFXS60N, MFXS71N, MFXS81N
MFAG20VB-N, MFAG26VB-N, MFAG35VB-N, MFAG50VB-N, MFAG60VB-N,
MFAG70VB-N, MFAG80VB-N, MFAG90VB-N, MFEF20VA-N, MFEF26VA-N,
MFEF35VA-N, MFEF50VA-N, MFEF60VA-N, MFEF70VA-N, MFEF80VA-N,
MFAB-20ND, MFAB-26ND, MFAB-35ND, MFAB-50ND, MFAB-60ND, MFAB-70ND,
MFAB-80ND, MFAB-90ND, MFEZ20VA-N, MFEZ26VA-N, MFEZ35VA-N,
MFEZ50VA-N, MFEZ60VA-N, MFEZ70VA-N, MFEZ80VA-N, MFEP26VB-N,
MFEP35VB-N, MFEP50VB-N, MFEP60VB-N, MFEP70VB-N, MFEP80VB-N, MFEP90VB-N

Wireless Module Model: EU-SK105, US-SK105, EU-SK106, US-SK106,
EU-SK107, US-SK107, EU-SK109, US-SK109, EU-SK110, US-SK110

Antenna Type: Printed PCB Antenna

Frequency Band: 2400 - 2483.5MHz

Operation Temperature: 0°- 45°C/32°-113°F

Operation Humidity: 10% ~ 85%

Power Input: DC 5V / 500mA

Maximum TX Power: < 20dBm

2 **PRECAUTIONS**

• **App Compatibility:**

- The app is available for both iOS and Android, however older versions may no longer be compatible. Please keep the app updated with the latest version. Midea makes no guarantee of compatibility and is not responsible for issues arising as a consequence thereof.
- The app is subject to updates without prior notice for product function improvement.

• **Wireless Security:**

- The Smart Kit supports the following security protocols:
WPA-PSK / WPA2-PSK / WPA3-SAE.
- It may be used with or without encryption although encryption is strongly recommended.

• **Connectivity:**

- Network issues may occasionally cause timeouts. The unit display and the app may become unsynchronized but this will resolve itself when the network is restored.
- Should the network remain unavailable, it might be necessary to run the configuration process again.
- Change in the wireless network will require reconfiguration of the device.

- **Configuration:**

- The actual network configuration process may vary slightly from the manual.
- Please check the service website for more information.

- **Restore to factory settings:**

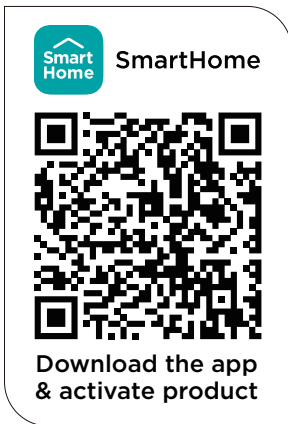
- When the user deletes the device on the APP, the module automatically restores to the factory settings.

3 USING THE SMARTHOME APP

- ⚠ Ensure that your mobile phone is connected to the wireless network. Bluetooth must be turned on. The device must also be powered up.

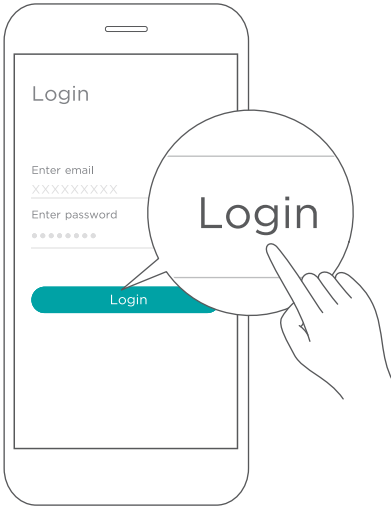
- **Step 1: Download the SmartHome app**

Scan the QR code below to download the SmartHome app from app store or search for it directly on the Google Play Store or Apple's App Store.



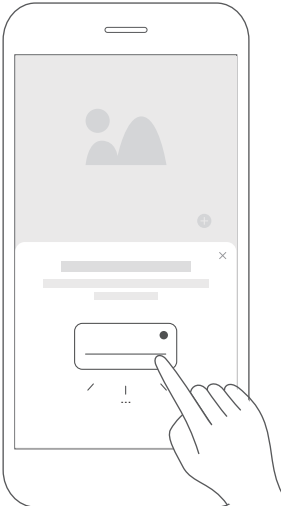
■ Step 2: Log in

Open the SmartHome app. Log in directly if you have an existing SmartHome account or create a new account. Alternatively, you can also use a 3rd party login platform.



■ Step 3: Connecting the device

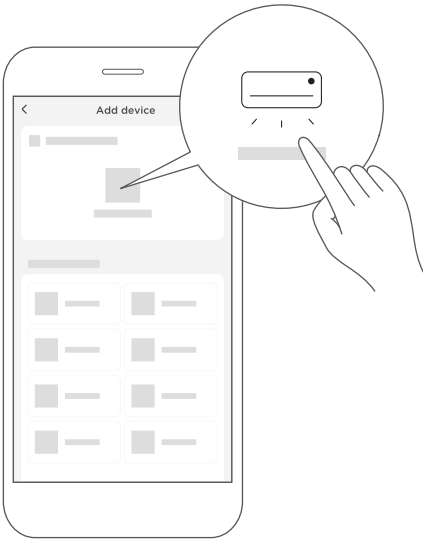
1) When you log in, you may see the message "Smart devices discovered nearby". Tap to add your device.



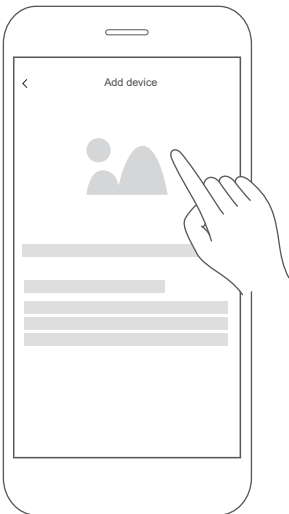
2) If no such message appears, proceed as follows:

Tap on "+" and select your device in the list of nearby available devices.

If your device is not listed, please add your device manually, first selecting the device category e.g. Portable AC.



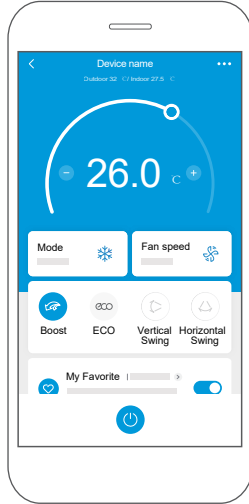
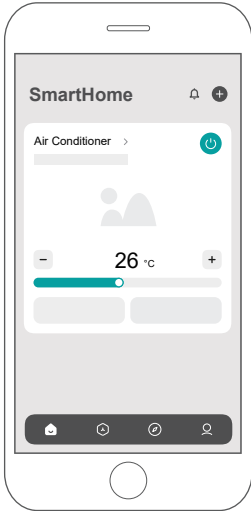
3) Follow the steps in the app to connect your device to the wireless network. If your device fails to connect, follow the additional instructions in the app.



■ Step 4: Controlling the device

After pairing successfully, a card will be created for the device in the SmartHome app. Shortcuts for basic functions will appear on the card such as changing the temperature or switching the device on or off.

Tapping on the card, will reveal additional features and settings. The actual UI design may look different from examples due to app updates.



4 COMPLIANCE

We, hereby declare that this device is in compliance with the relevant provisions of RE Directive 2014/53/EU. A copy of the full DoC is attached (European Union products only).

Wireless module models:

US-SK105, EU-SK105, EU-SK107, US-SK107:

FCC ID: 2ADQOMDNA21

IC: 12575A-MDNA21

US-SK106, EU-SK106:

FCC ID: 2ADQOMDNA22

IC: 12575A-MDNA22

US-SK109, EU-SK109, EU-SK110, US-SK110:

FCC ID: 2ADQOMDNA23

IC: 12575A-MDNA23

This device complies with Part 15 of the FCC Rules and it contains licence exempt transmitter(s)/receiver(s) that comply with Innovation, Science and Economic Development Canada's licence-exempt RSS(s).

Operation is subject to the following two conditions:

- (1) This device may not cause harmful interference;
- (2) This device must accept any interference, including interference that may cause undesired operation of the device.

Only operate the device in accordance with the instructions supplied. Changes or modifications to this unit not expressly approved by the party responsible for compliance could void the user's authority to operate the equipment.

This device complies with FCC radiation exposure limits set forth for an uncontrolled environment. In order to avoid the possibility of exceeding the FCC radio frequency exposure limits, human proximity to the antenna shall not be less than 20cm (8 inches) during normal operation.

In Canada:

CAN ICES-3(B)/NMB-3(B)

Le présent appareil est conforme aux CNR Innovation, Sciences et Développement économique Canada applicables aux appareils radio exempts de licence.

L'exploitation est autorisée aux deux conditions suivantes:

- (1) il ne doit pas produire de brouillage et
- (2) l'utilisateur du dispositif doit être prêt à accepter tout brouillage radioélectrique reçu, même si ce brouillage est susceptible de compromettre le fonctionnement du dispositif.

Cet émetteur ne doit pas être Co-placé ou ne fonctionnant en même temps qu'aucune autre antenne ou émetteur. Cet équipement devrait être installé et actionné avec une distance minimum de 20 millimètres entre le radiateur et votre corps.

NOTE: This equipment has been tested and found to comply with the limits for a Class B digital device, pursuant to part 15 of the FCC Rules. These limits are designed to provide reasonable protection against harmful interference in a residential installation.

This equipment generates, uses and can radiate radio frequency energy and, if not installed and used in accordance with the instructions, may cause harmful interference to radio communications.

However, there is no guarantee that interference will not occur in a particular installation. If this equipment does cause harmful interference to radio or television reception, which can be determined by turning the equipment off and on, the user is encouraged to try to correct the interference by one or more of the following measures:

- Reorient or relocate the receiving antenna.
- Increase the separation between the equipment and receiver.
- Connect the equipment into an outlet on a circuit different from that to which the receiver is connected.
- Consult the dealer or an experienced radio/TV technician for help.

Importer:

MIDEA AIR CONDITIONING AUSTRALIA

7 Ordish Road Dandenong South VIC 3175 Australia

E-mail: info@mdhome.com.au

Company will not be liable for any issues and problems caused by Internet, Wireless Router and Smart Devices. Please contact the original provider to get further help.

CS380-APP(Smarthome-Build in)

16110800A12841